

The Great Guelph Museums Artefact Heist!



It seems the puppets in the Families Gallery have stolen some of our artefacts, and replaced them with forgeries!

Can you help us catch them in the act?

Here's how we think the heist happened...



10:25 PM, Wednesday, March 18: Video camera footage shows a meeting of the puppets.

Our museum experts suspect that this is when their ringleader, Logan the Lamb, convinced the other puppets to help him steal some of Guelph Museums' artefacts, and replace them with forged copies.

Here's how you can help!

These puppets are clever, but they can be a bit careless. Each forgery contains three mistakes, and the footprint of one puppet. If you can find them all, we can prove what happened!

For reference, we've put a photo of each original artefact next to the forged copy. The originals have a "Guelph Museums Archival Material" label, and the forgeries are all in brown frames.

Tip: zoom in so you can really study the pictures.

Turn to the last page to check your answers.

Each picture has one of these footprints:

Cow: 

Duck: 

Sheep: 

Pig: 

Horse: 

Chicken: 

Rabbit: 



Guelph Museums Archival Material
Accession Number: 2010.52.5



This is something called a *carte-de-visite* from around the year 1865. It has a photograph of a woman, who probably gave copies of this photograph to her friends.



Guelph Museums Archival Material
Accession Number: 2004.17.4



This is an advertisement for Bell Piano and Organ Company, likely produced in the 1890s.

They were very proud of the fact that Queen Victoria owned several instruments built by their company!

This is a photograph of Guelph businessman, Sam Lee Hing, taken around the year 1903. Sam Lee Hing moved to Guelph from China some time after 1894, and soon established a very successful laundry business in downtown Guelph.



Guelph Museums Archival Material
Accession Number: 1979X.00.269



Guelph Museums Archival Material
Accession Number: 1986.55.3



This is a cloth patch showing the crest of the Biltmore Mad Hatters hockey team.

The Biltmore Mad Hatters were a junior hockey team in the Ontario Hockey Association, from 1940-1942, and again from 1947-1960.

Guelph Museums Archival Material
Accession Number: 2013.26.1



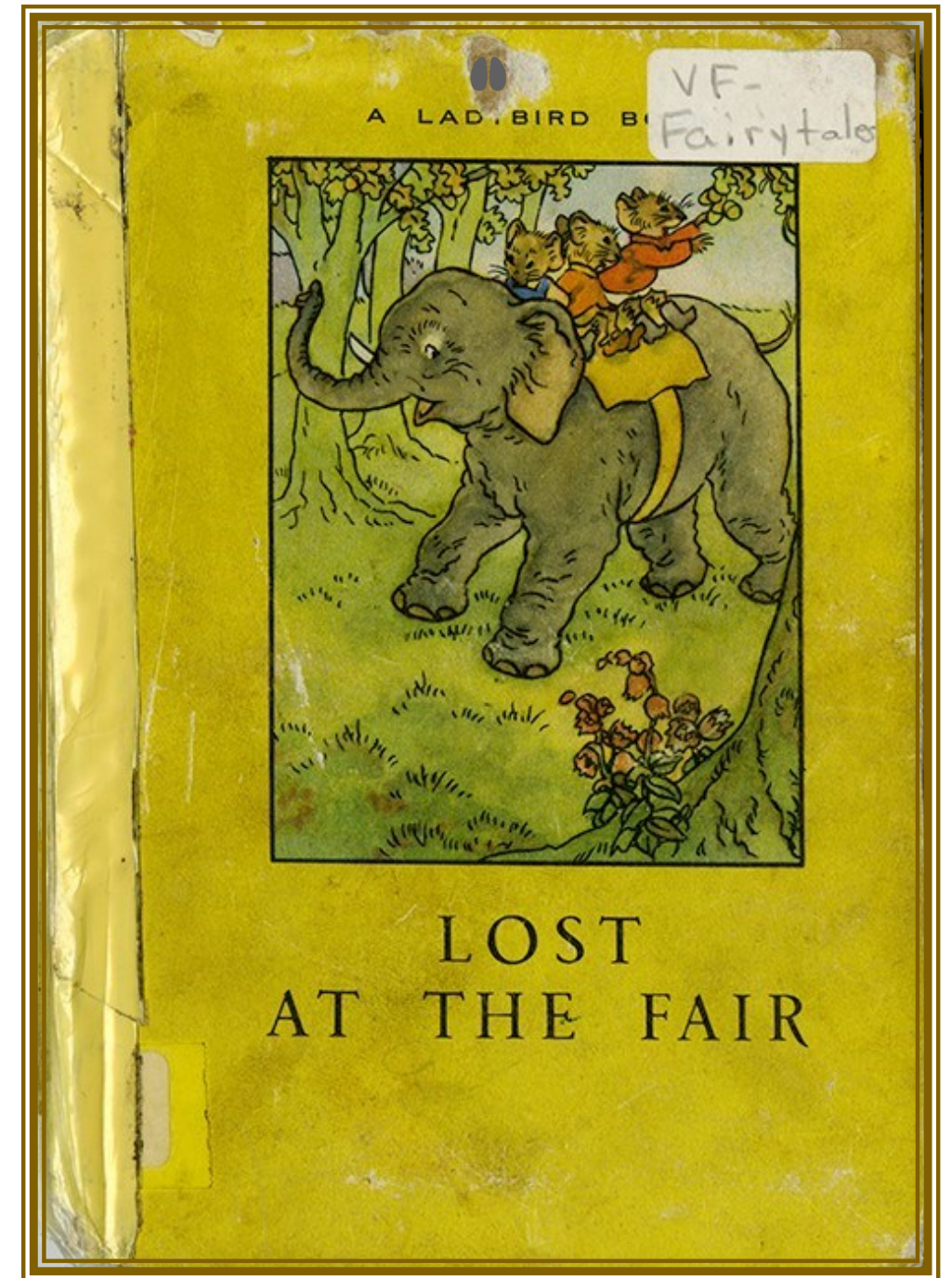
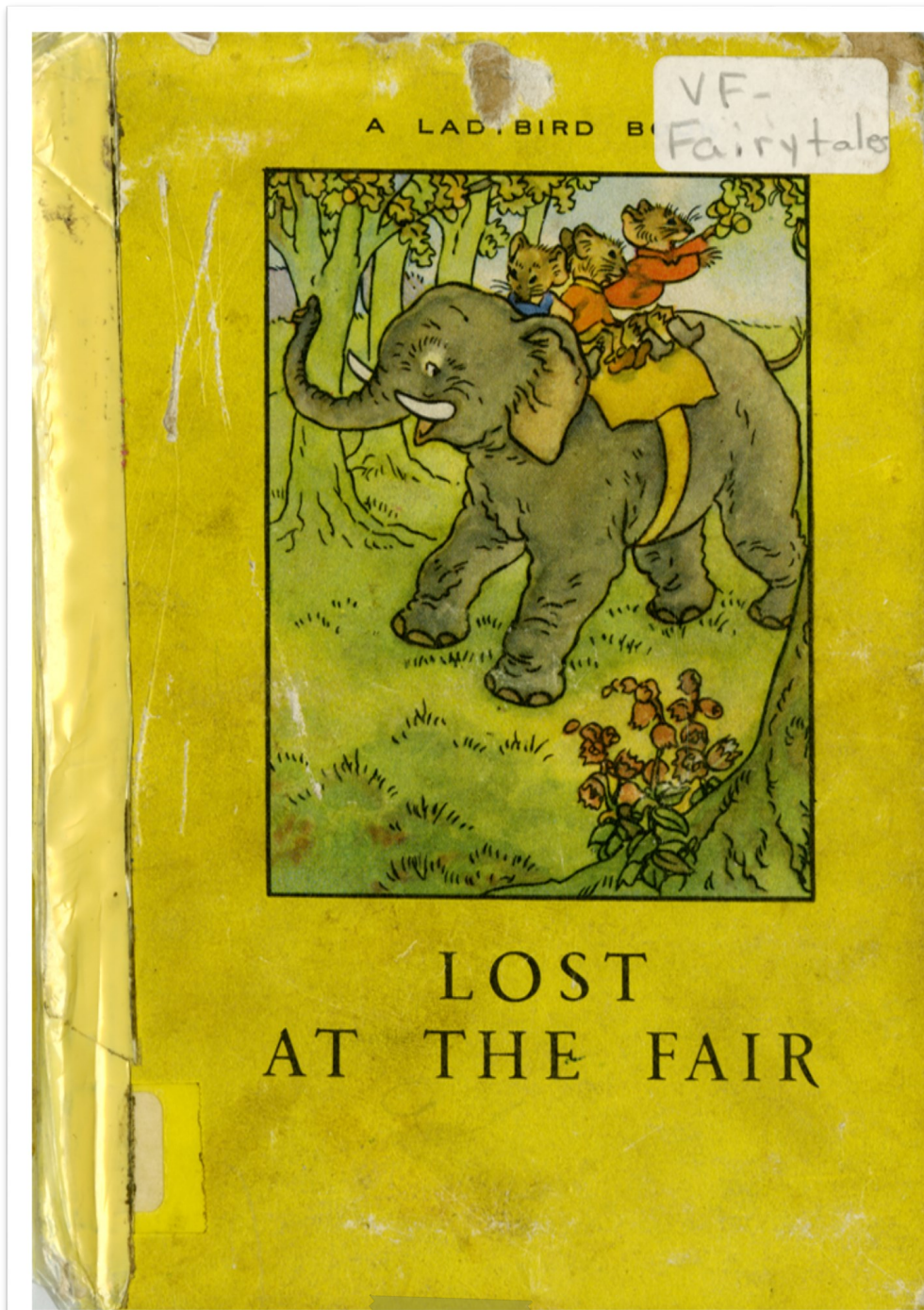
This is an image of eight men curling on a pond or river, while spectators watch.

The image was created by artist, Evan MacDonald, who lived from 1905-1972.



This is the cover of a children's book called *Lost at the Fair*, from the 1960s.

This book belonged to Torrance Public School, which used to be one of Guelph's public schools.



Guelph Museums Archival Material

Accession Number: 2016.61.16



Guelph Museums Archival Material
Accession Number: 1998.33.2



This is a photograph of an unidentified family, probably taken in the 1880s.

It is possible that this photograph shows members of the Jewell Family, many of whose descendants became prominent musicians in Guelph.

Solved!

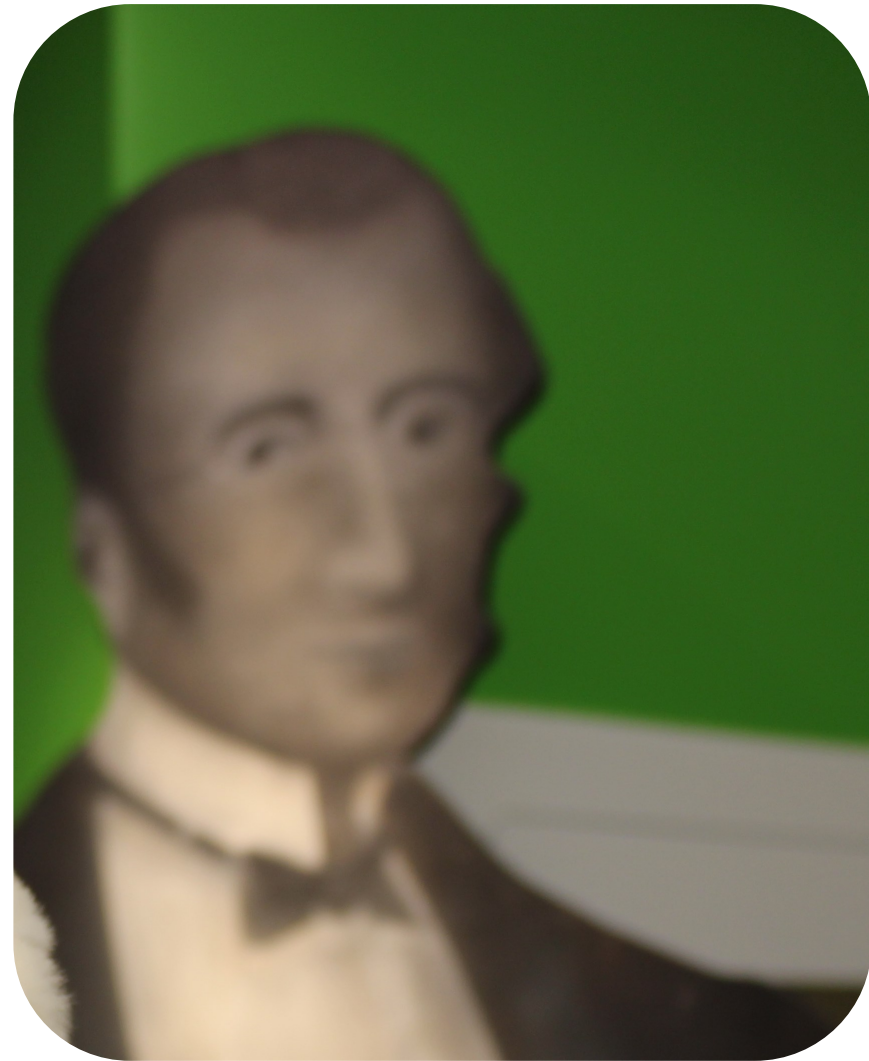
Thanks to all your hard work, we were able to prove that our Families Gallery puppets took some of our artefacts, and replaced them with copies!



We practised good physical distancing, and didn't go to the museum to confront the animals in person. Instead, we asked our figure of John Galt to tell Logan Lamb that we know exactly what the animals have been up to.

Go to the next page to find out what happened when John Galt accused Logan Lamb...

Official Interview Transcript with Logan Lamb, Part One:



John Galt: The staff know what you've done, Logan Lamb! They saw the footage of your meeting, and they've found all your mistakes. You've been stealing artefacts!

Logan Lamb: You're right... we did take artefacts, and we did replace them with copies.

John Galt: Aha! What a terrible crime.

Logan Lamb: A crime? No! Let me explain! We puppets knew that the humans had to close down the museum. We knew that we, alone, were responsible for taking care of the artefacts while they were away. Why do you think I had all that wool with me in the meeting?

John Galt: The wool? I don't know! Why *did* you have that wool with you?

Official Interview Transcript with Logan Lamb, Part Two:

Logan Lamb: We've been using the fluffy wool to clean all the artefacts because we want to help take care of them!

We knew that if the humans noticed the artefacts were missing, they would get worried, so we made fake ones to put in their place while we cleaned the real ones.

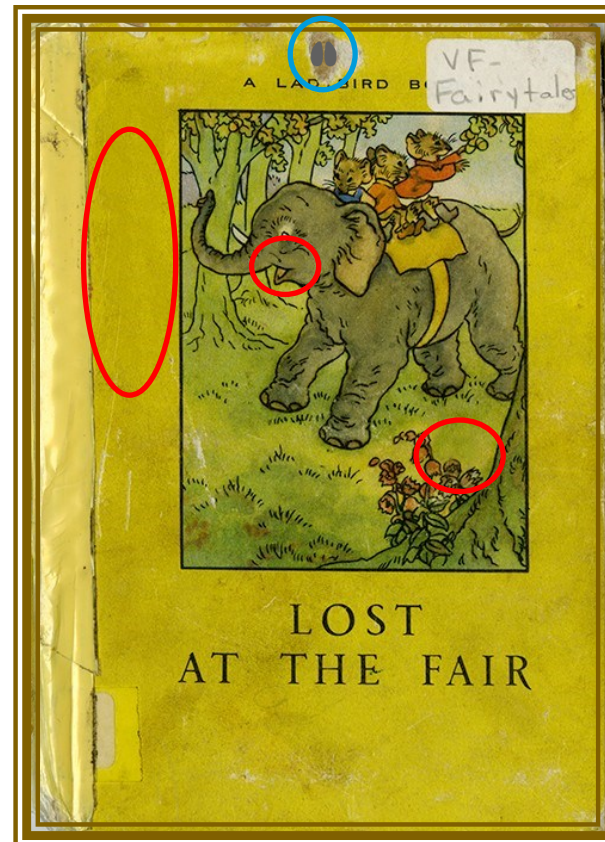
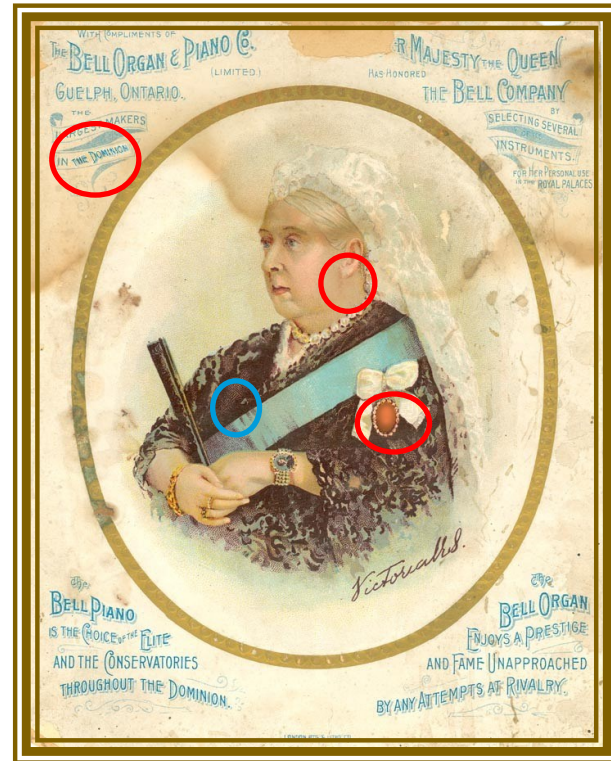
But obviously the museum staff are still taking very good care of the collection, if they noticed all the tiny mistakes in the copies we made.

John Galt: Oh, wow! Thanks Logan Lamb! But you're right. The museum staff are making sure the artefacts are still safe. You don't need to worry about that while they're away from the museum.



Logan Lamb: That's great! All we need to do now is keep hanging out in the Families Gallery, looking forward to when all the kids get to come back!

Solutions:



○ Forgery mistakes

○ Footprints